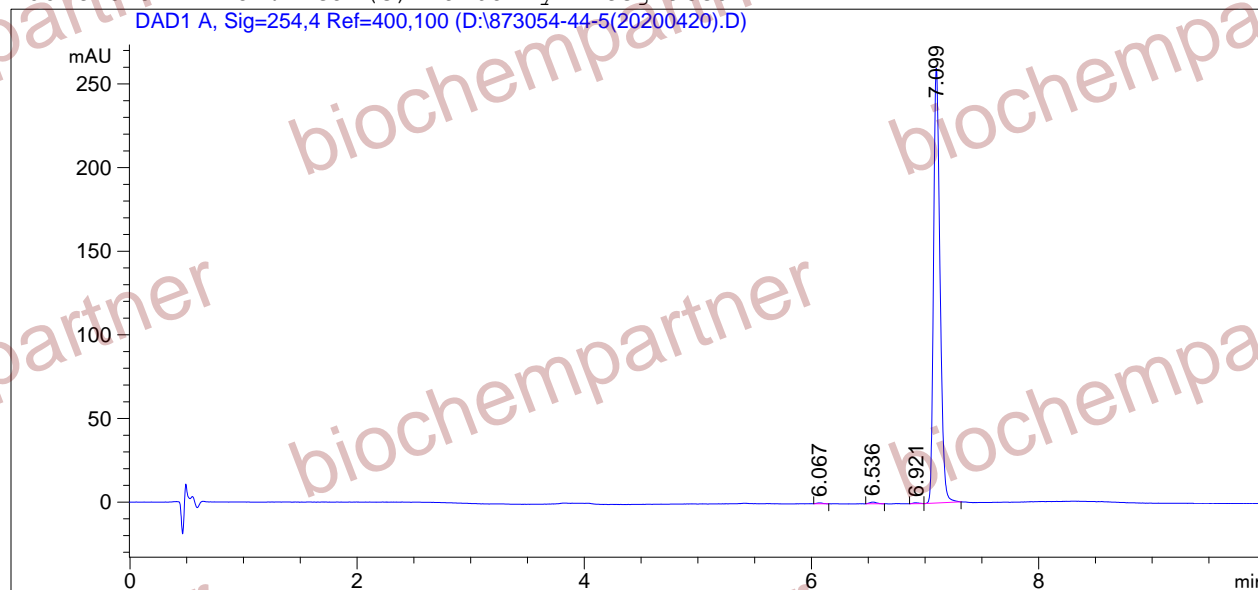


=====
Acq. Operator : Seq. Line : 1
Acq. Instrument : Instrument 1 Location : Vial 4
Injection Date : 4/20/2020 2:31:31 PM Inj : 1
Inj Volume : 3.0 µl
Different Inj Volume from Sequence ! Actual Inj Volume : 2.0 µl
Acq. Method : D:
Last changed : 6/6/2018 1:09:06 PM
Analysis Method : D:\CHEM32\1\1.M
Last changed : 4/20/2020 2:42:29 PM
(modified after loading)
Sample Info : [A = ACN, B = acid-1/H2O] 10-95% A/B 6 min, 95% A/B 4 min; Athena C18 (3 µm, 2
.1 mm * 100 mm); Flow: 0.45 ml/min, T = 25

Additional Info : Peak(s) manually integrated



=====
Area Percent Report
=====

Sorted By : Signal
Multiplier : 1.0000
Dilution : 1.0000
Use Multiplier & Dilution Factor with ISTDs

Signal 1: DAD1 A, Sig=254,4 Ref=400,100

Peak #	RetTime [min]	Type	Width [min]	Area [mAU*s]	Height [mAU]	Area %
1	6.067	BB	0.0403	1.71841	5.16716e-1	0.1655
2	6.536	BB	0.0499	4.05900	9.87814e-1	0.3910
3	6.921	BV	0.0485	2.05948	5.46138e-1	0.1984
4	7.099	VB	0.0612	1030.29736	260.05908	99.2451

Totals : 1038.13426 262.10975

=====
*** End of Report ***